



DSS and DCF report to the
Behavioral Health Partnership
Oversight Council

Quality Management and Access
Subcommittee

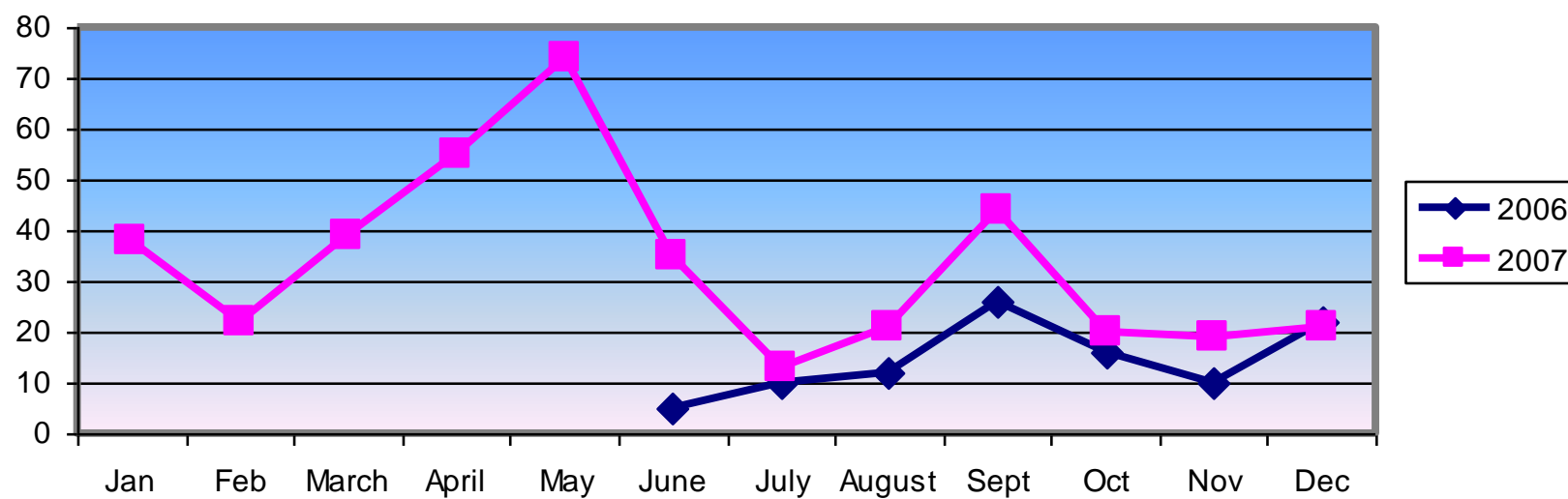
February 15, 2008

ED Delay Data

ED DATA

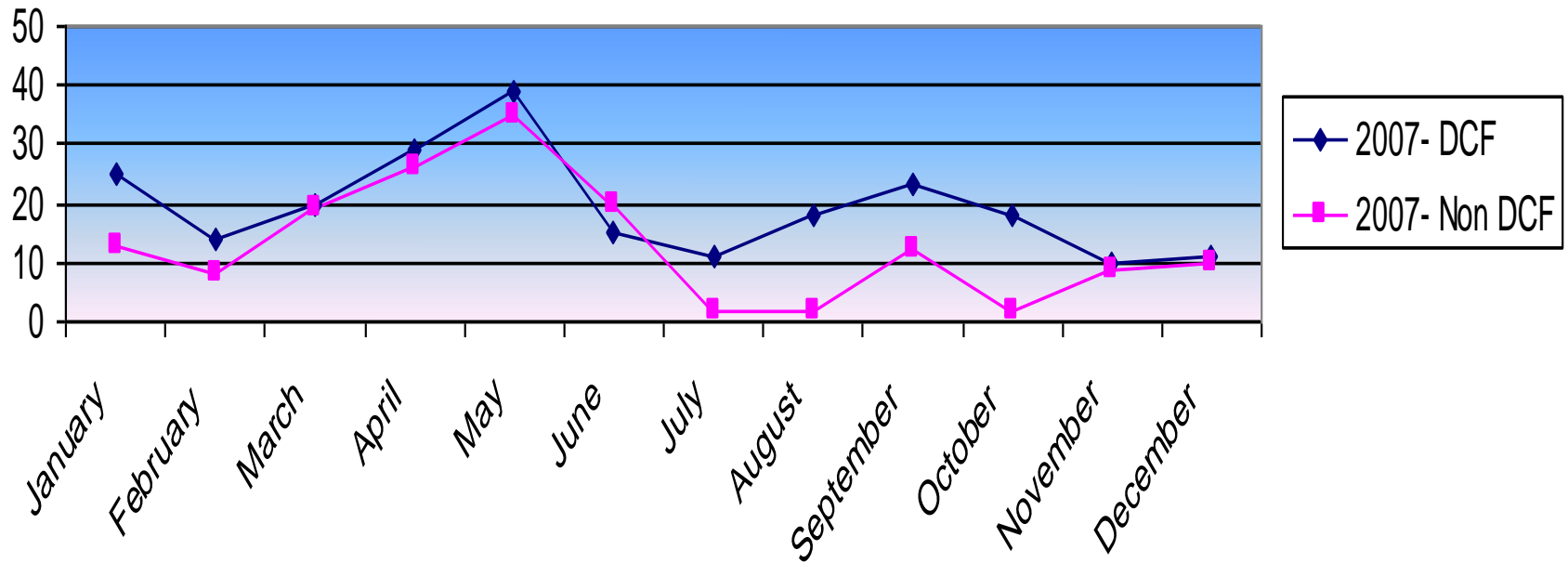
- In November and December CARES data began to be accumulated alongside ED data. In the following data, these cases are not part of the case count even though many entered through the ED. Likewise their lengths of stay are not reflected in ALOS.
- In November, 24 CARES cases were captured, 14 DCF and 10 Non DCF.
- In December, 23 CARES cases were captured, 14 DCF and 9 Non DCF.

Members in ED Delay Tracking Status per Month

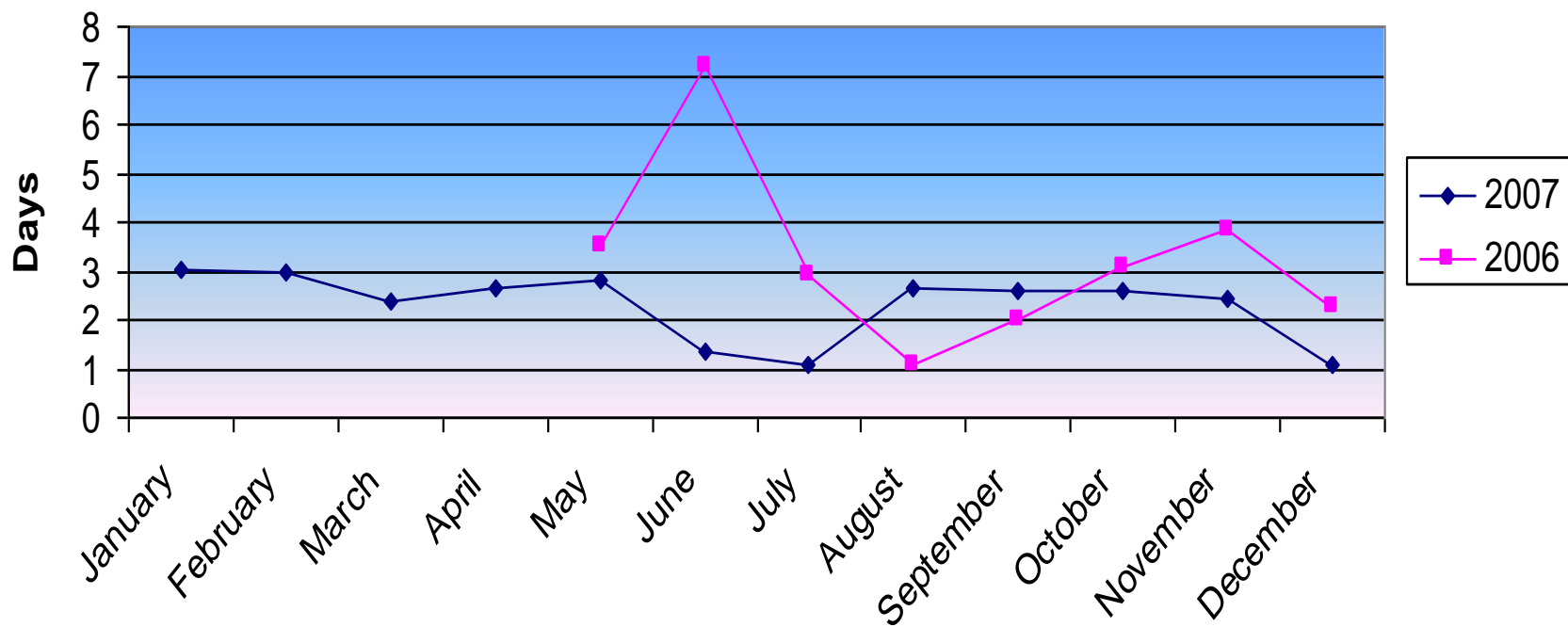


Number of Members in ED Delay Tracking Status Per Month

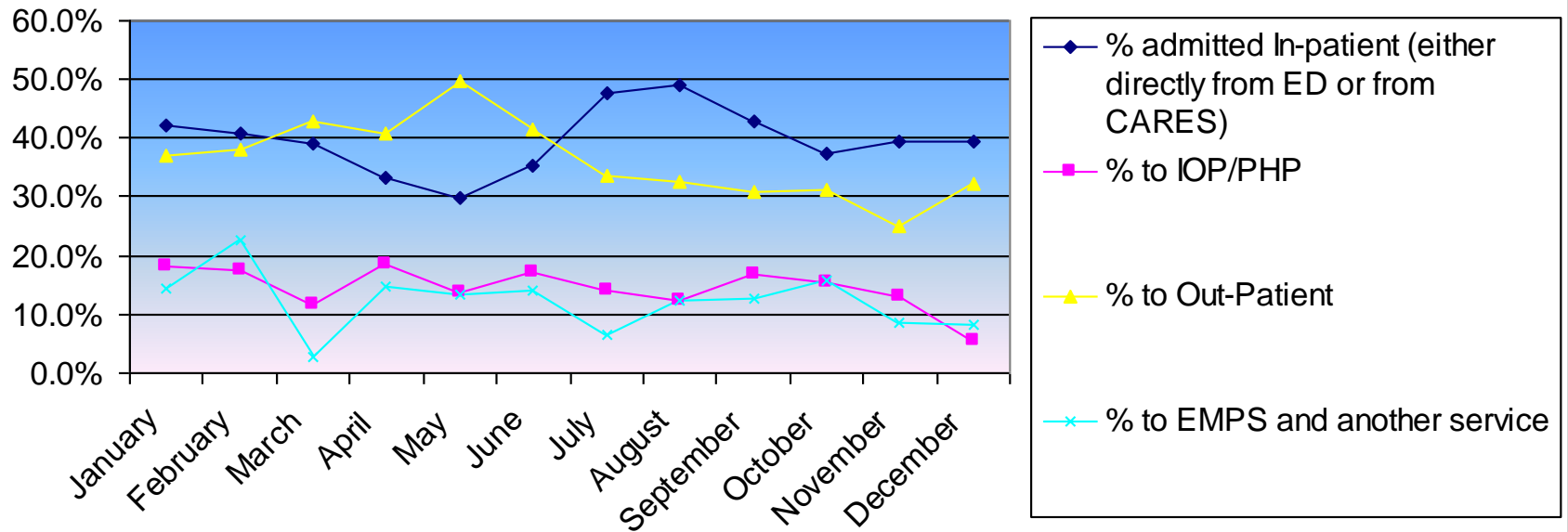
DCF vs. Non



Average LOS in ED (all ED's)



2007 CCMC ED Disposition Data

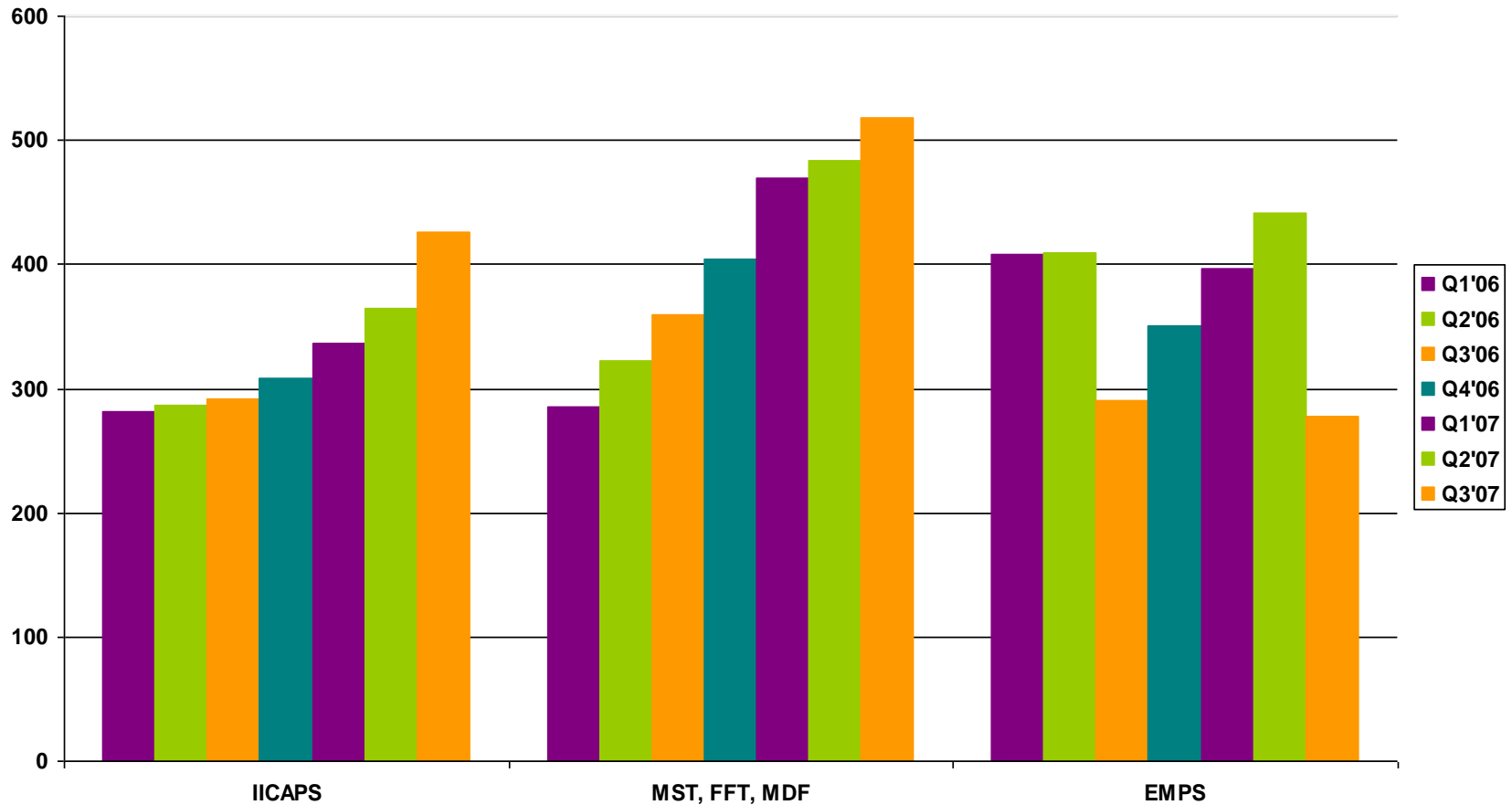


ED Delay 2007

- 402 Members were reported as Discharge Delay in ED's in 2007
- Total Days in ED= 956 days.
- ALOS in ED in 2007 was 2.39 days

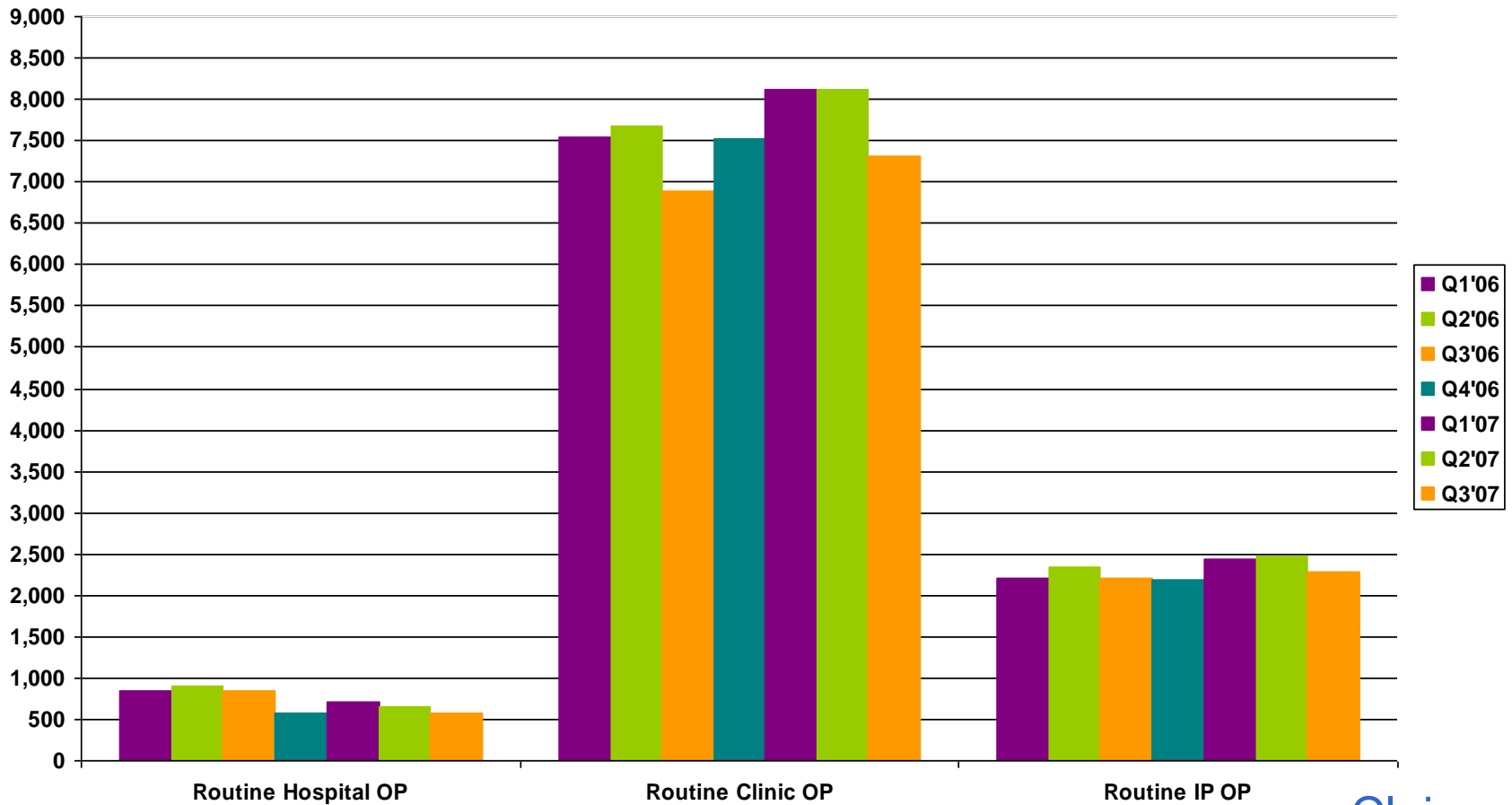
Child Utilization

Home-Based Service Unduplicated Recipients – Child



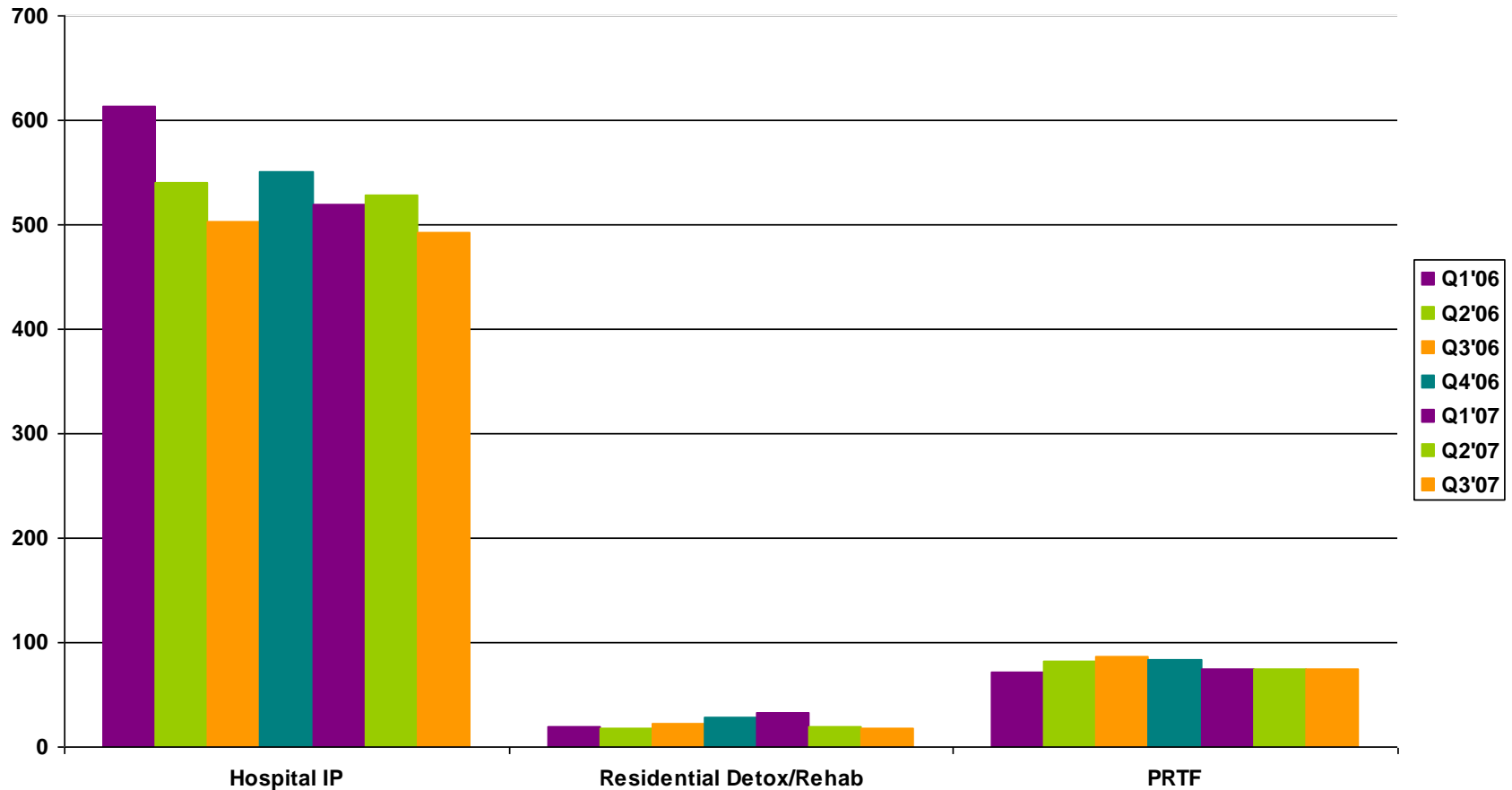
Claims

Outpatient Unduplicated Recipients-Child



Claims

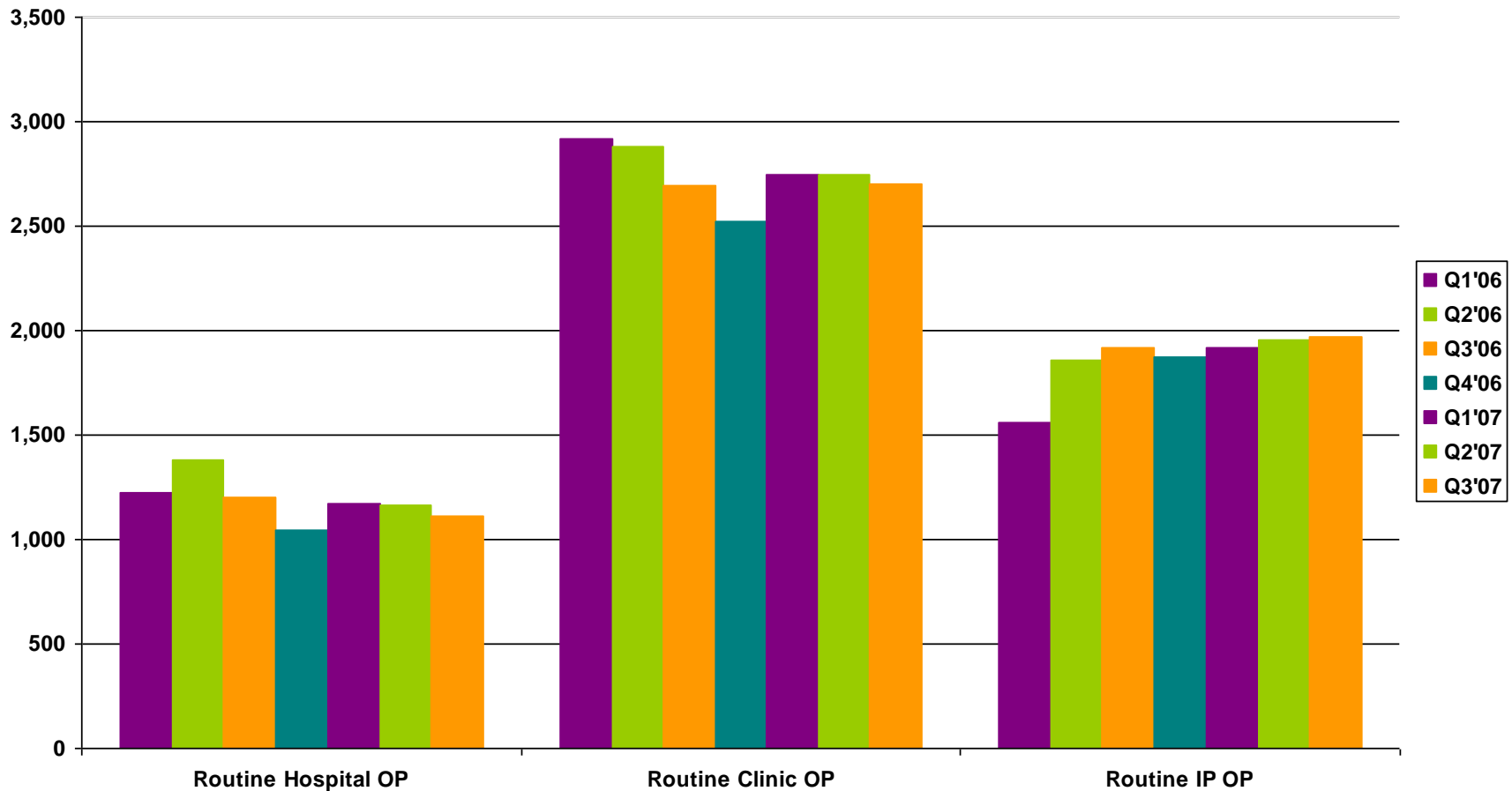
Inpatient Unduplicated Recipients - Child



Claims

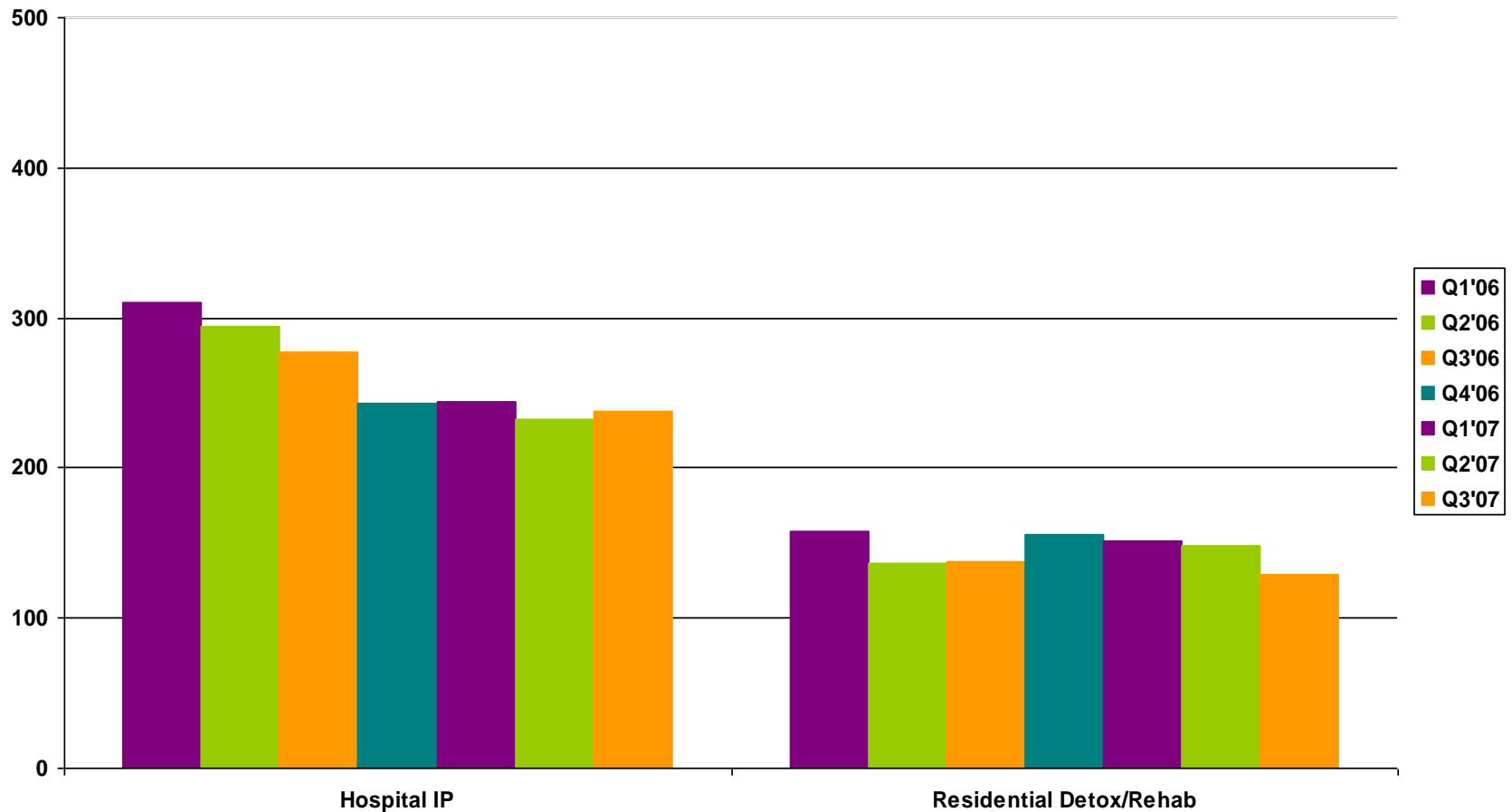
Adult Utilization

Outpatient Unduplicated Recipients - Adult



Claims

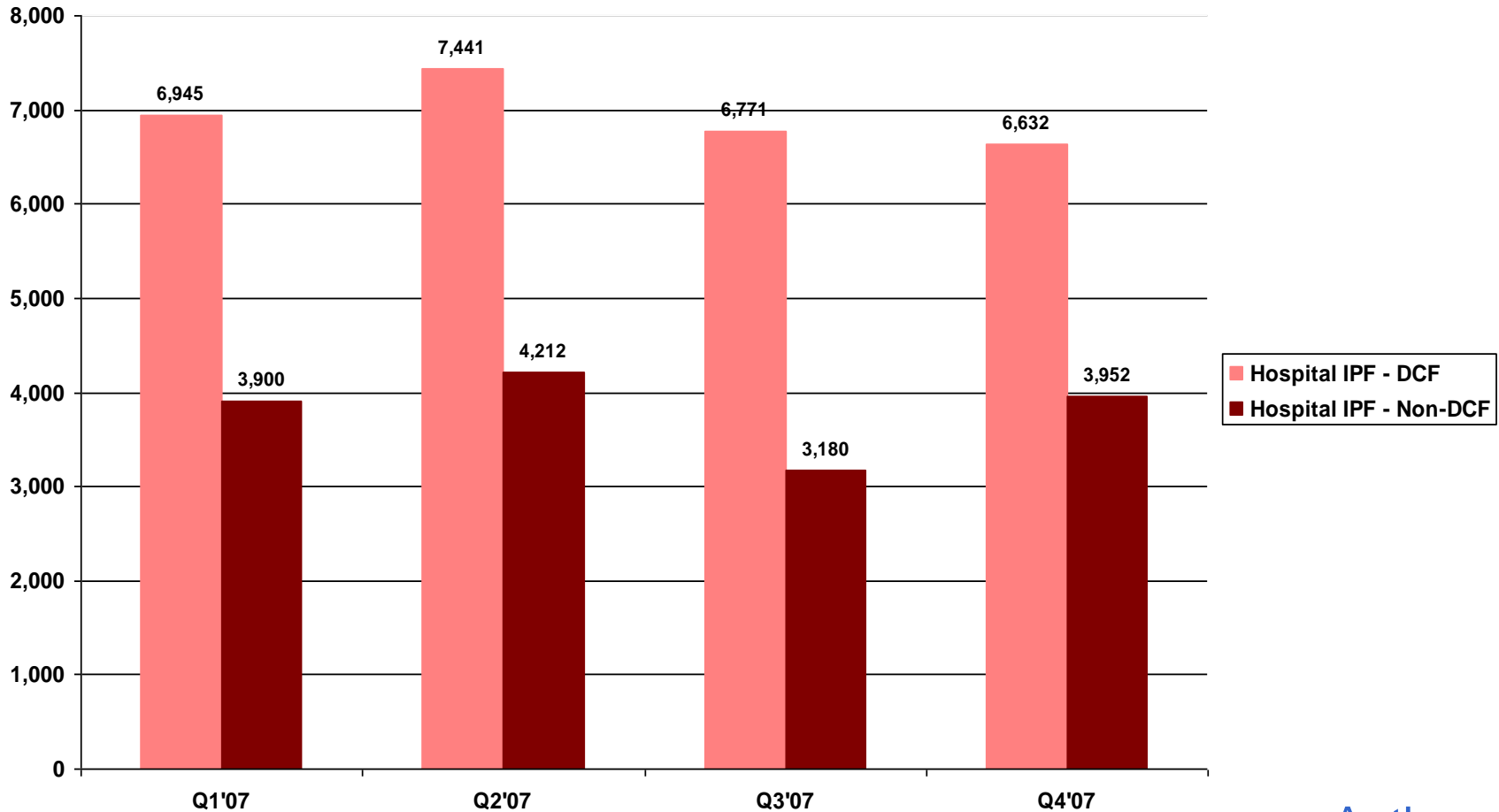
Inpatient Unduplicated Recipients – Adult



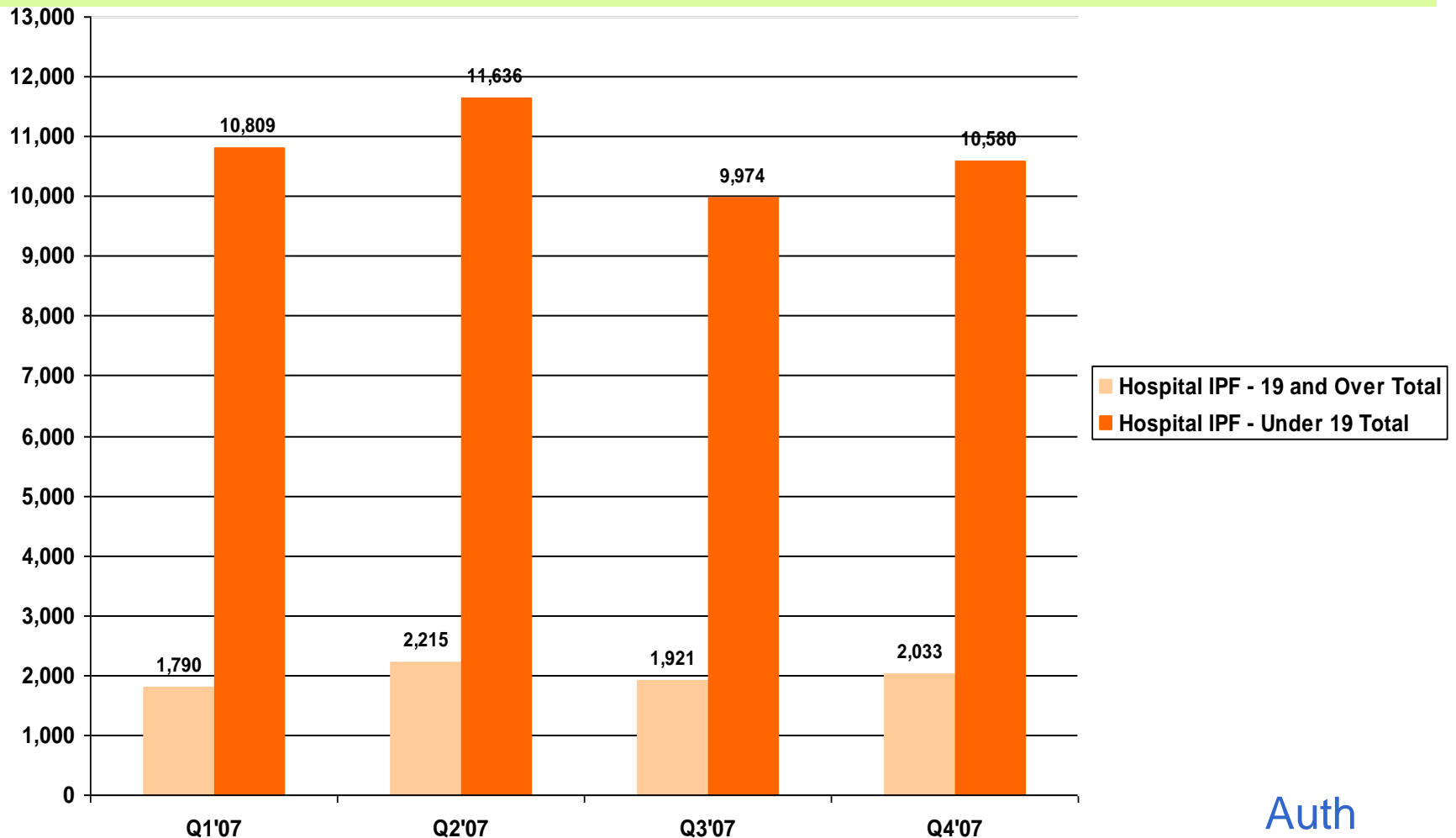
Claims

A Closer Look At Inpatient

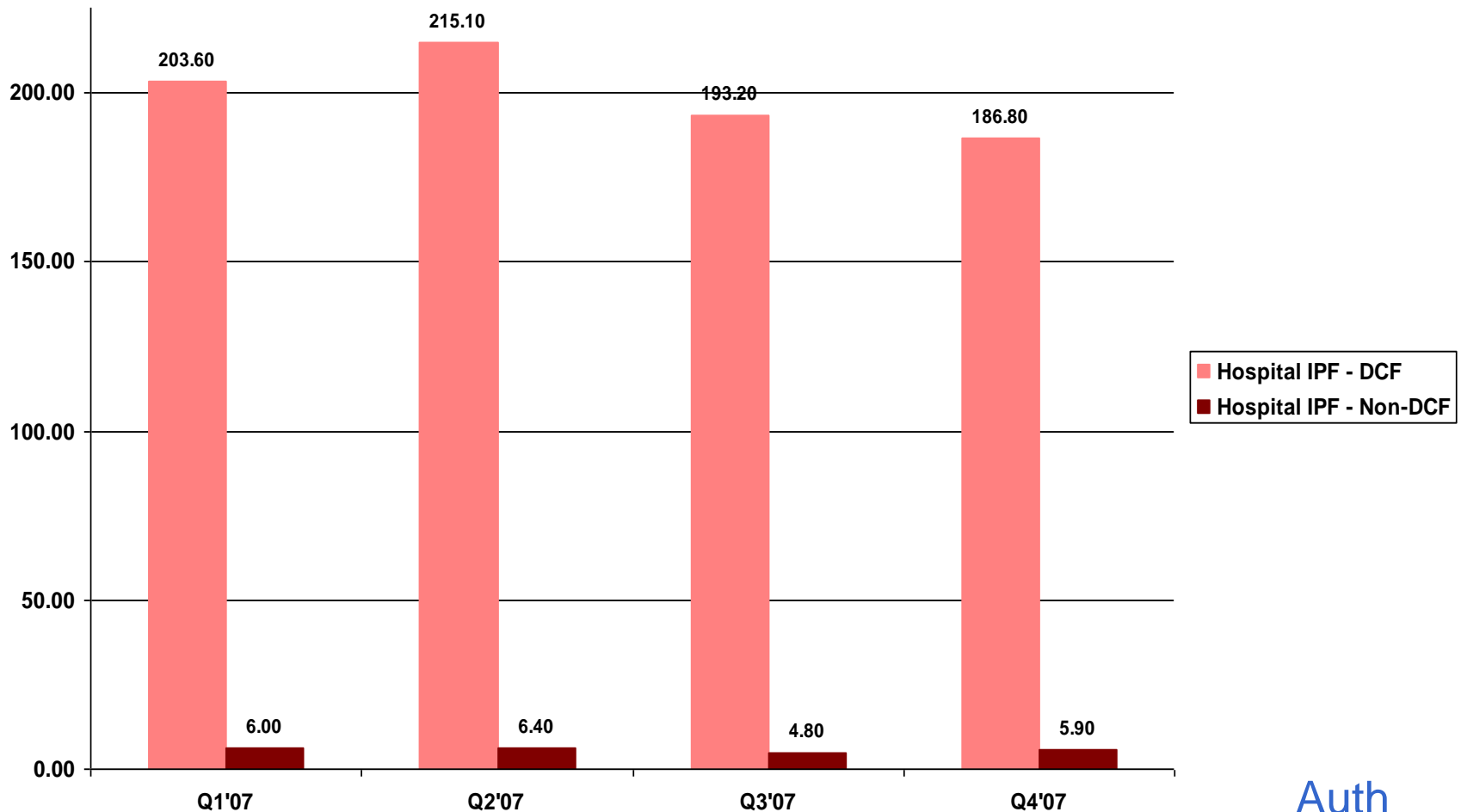
Total Inpatient Days – DCF and Non-DCF Child



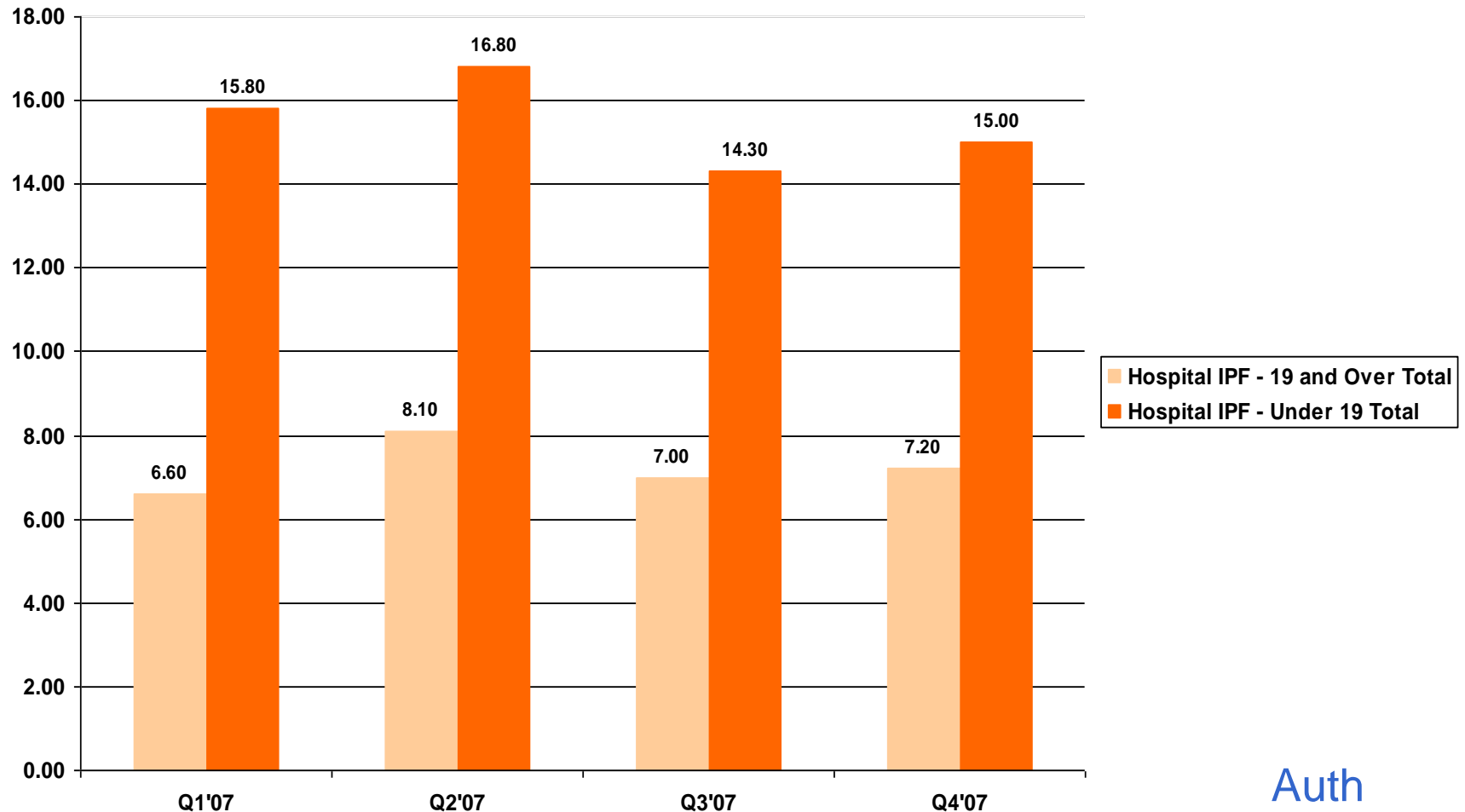
Total Inpatient Days – All Child and Adult



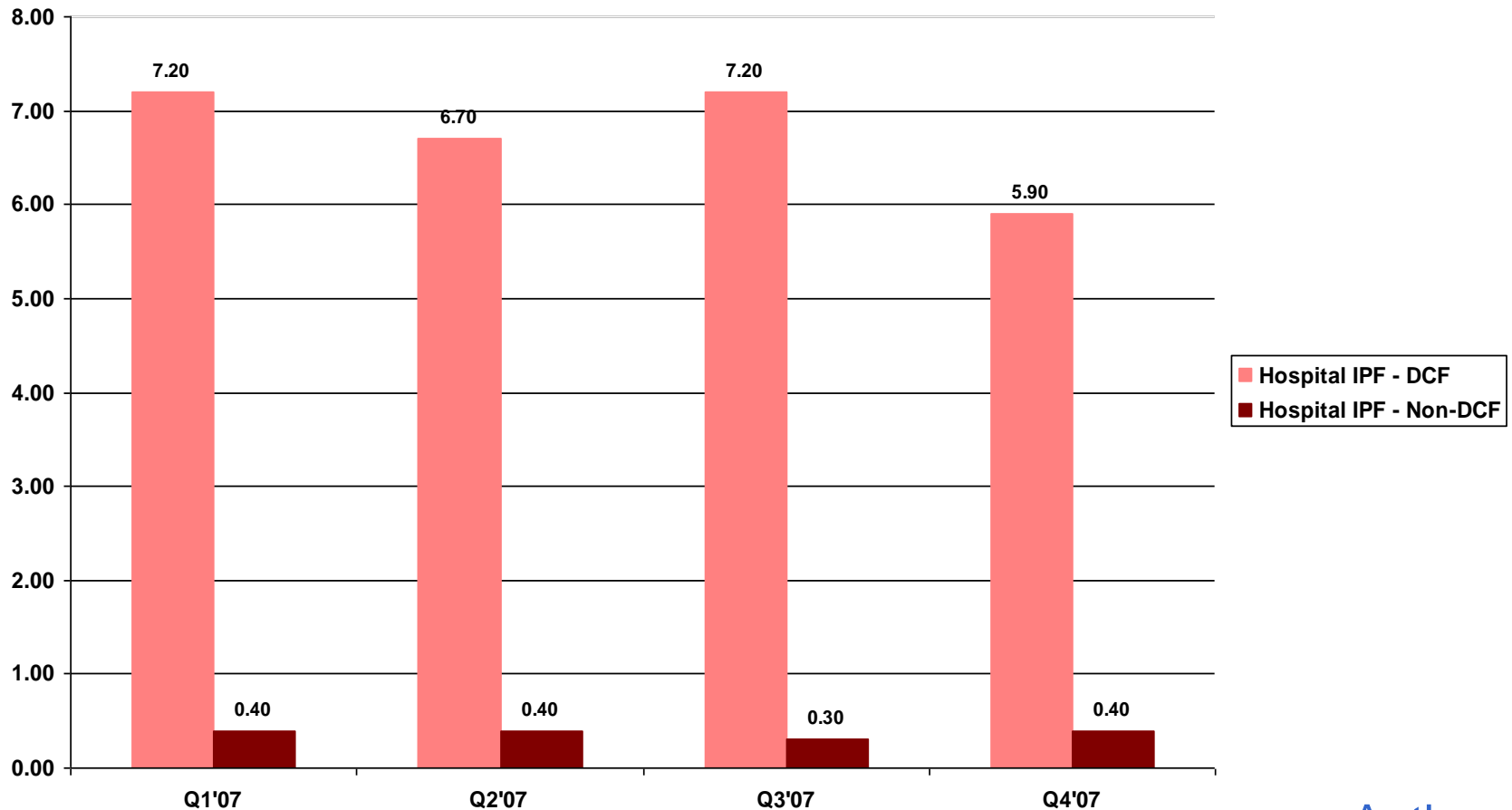
Inpatient Days per 1000 – DCF and Non-DCF Child



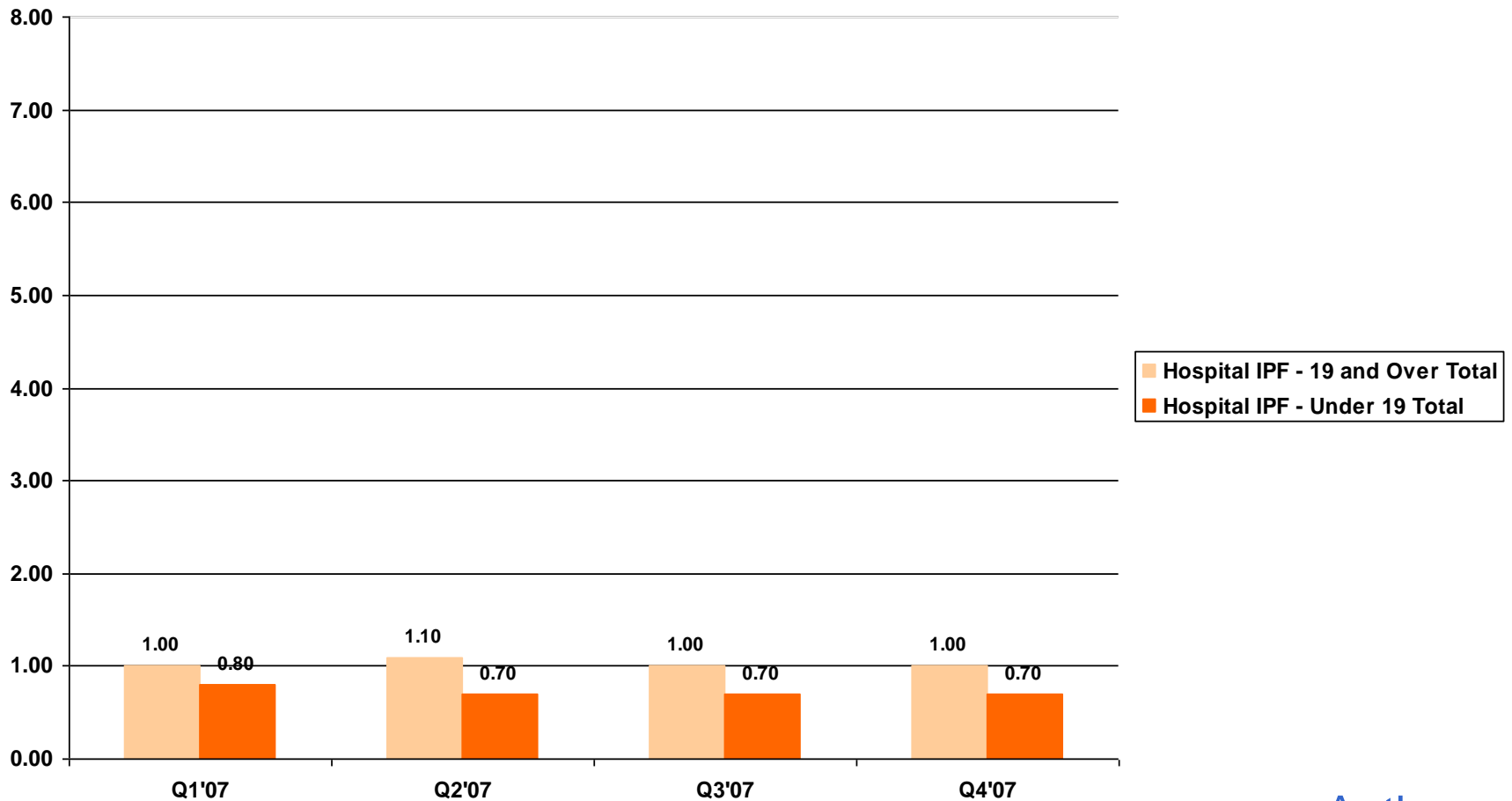
Inpatient Days per 1000 – All Child and Adult



Inpatient New Admits per 1000 – DCF and Non-DCF Child



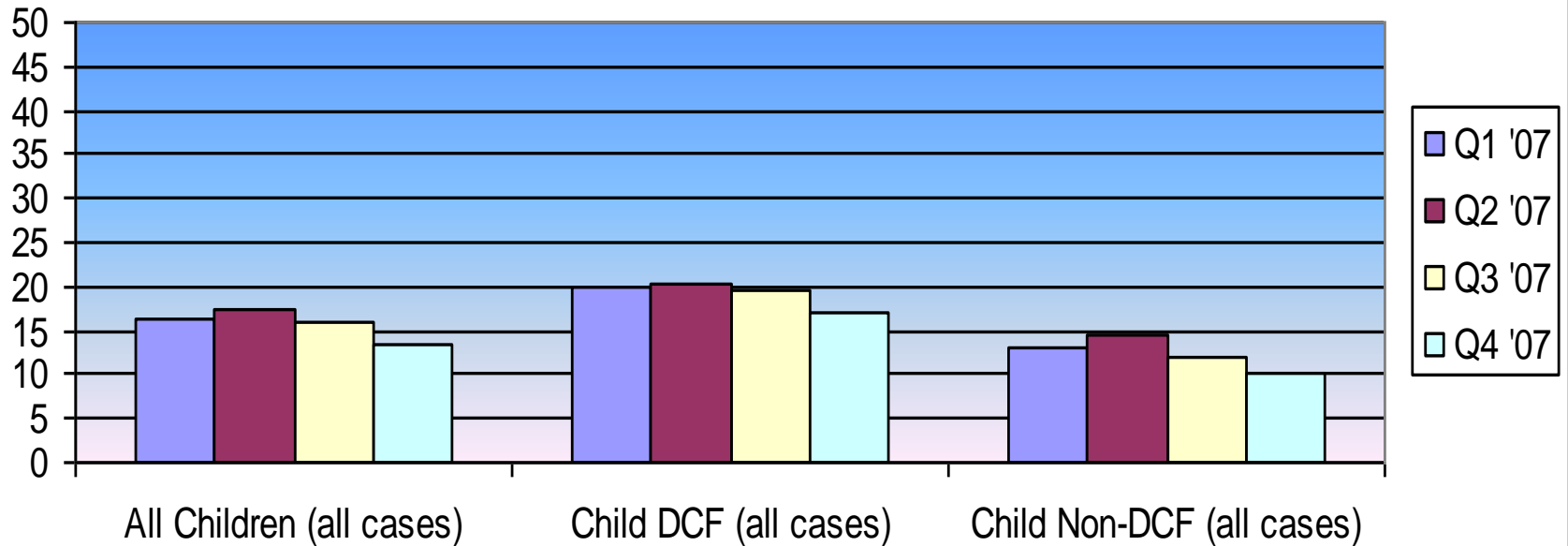
Inpatient New Admits – All Child and Adult



Auth

Inpatient ALOS and Delay Analysis

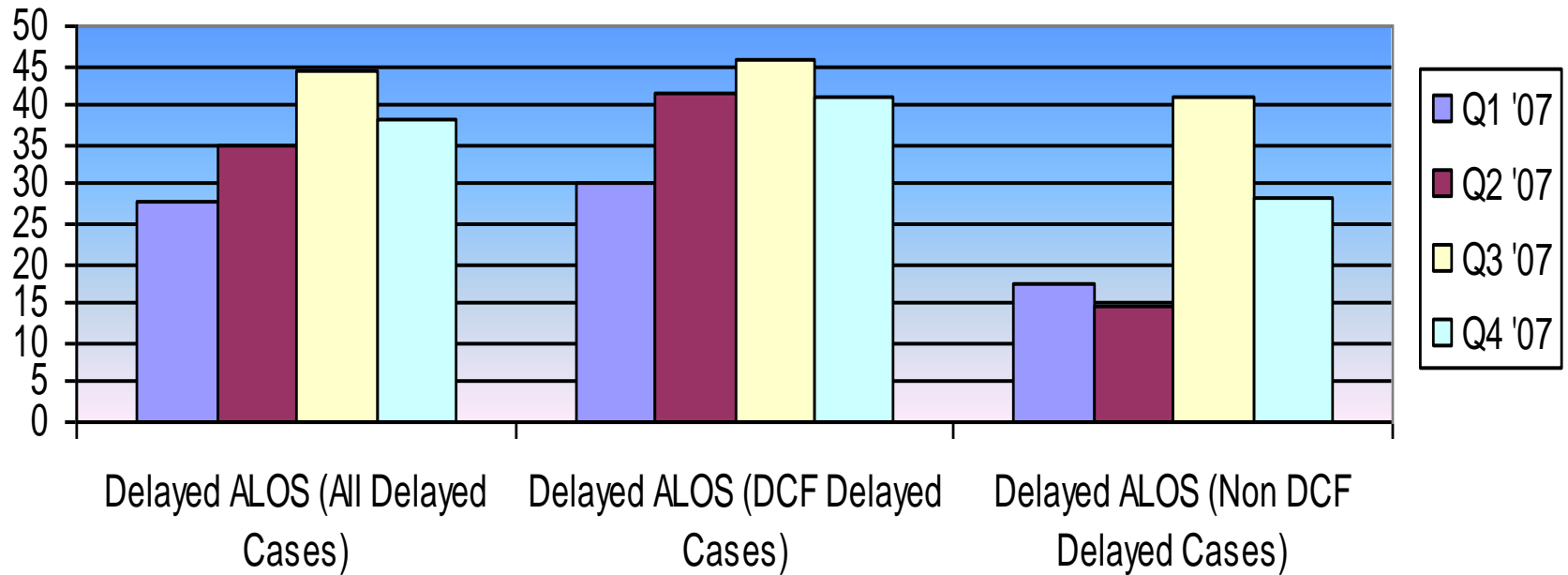
Average Acute Length of Stay



Includes: All cases discharged within the quarter

Excludes: Riverview

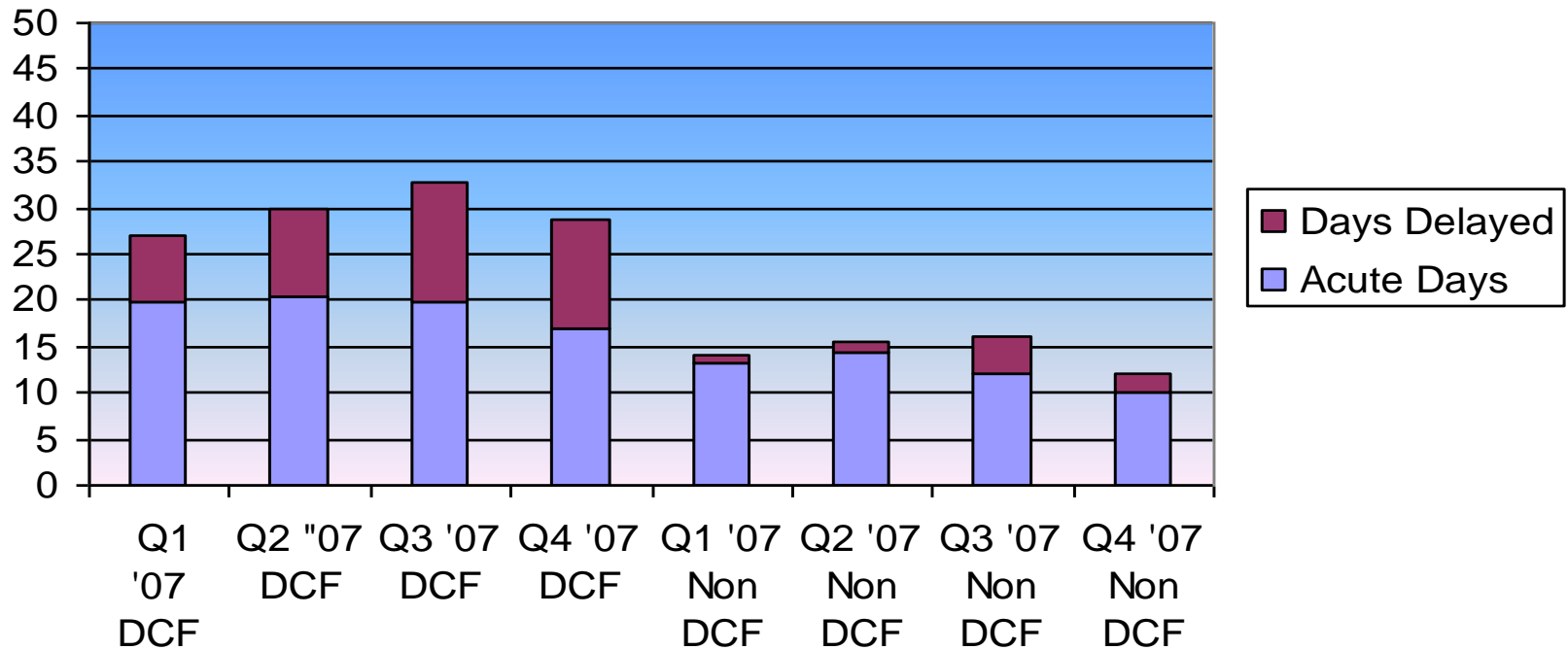
Average Delayed Length of Stay



Includes: Delayed cases discharged within the quarter

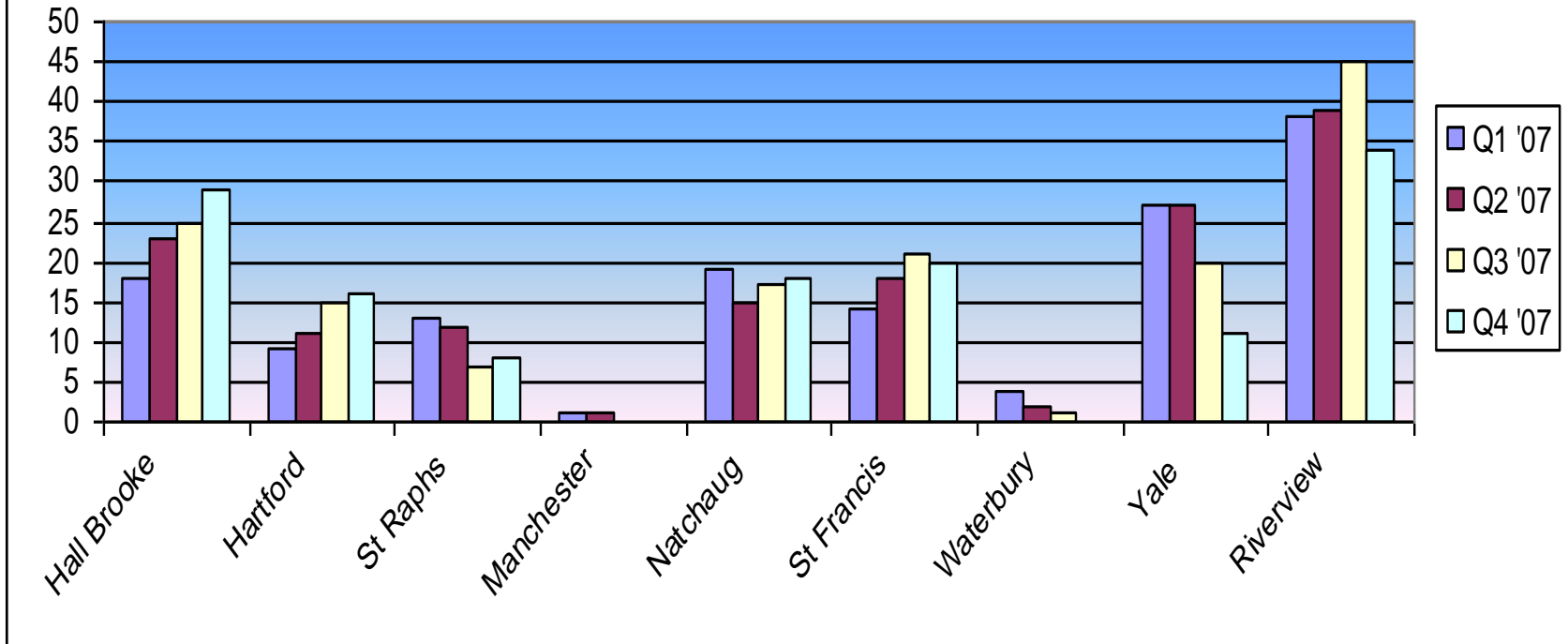
Excludes: Riverview

Average Length of Stay Acute vs. Discharge Delay, DCF vs. Non DCF



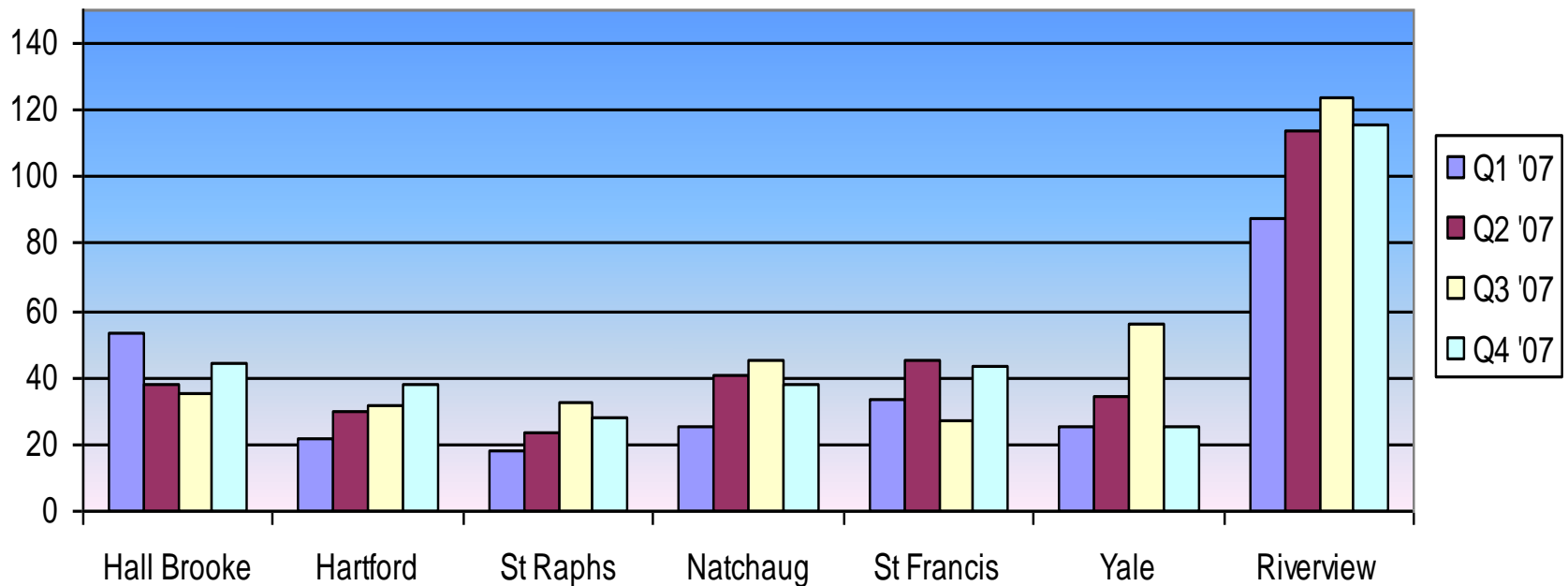
Includes: Delayed cases discharged within the quarter
 Excludes: Riverview

Total # of Children in Discharge Delay by Inpatient Facility



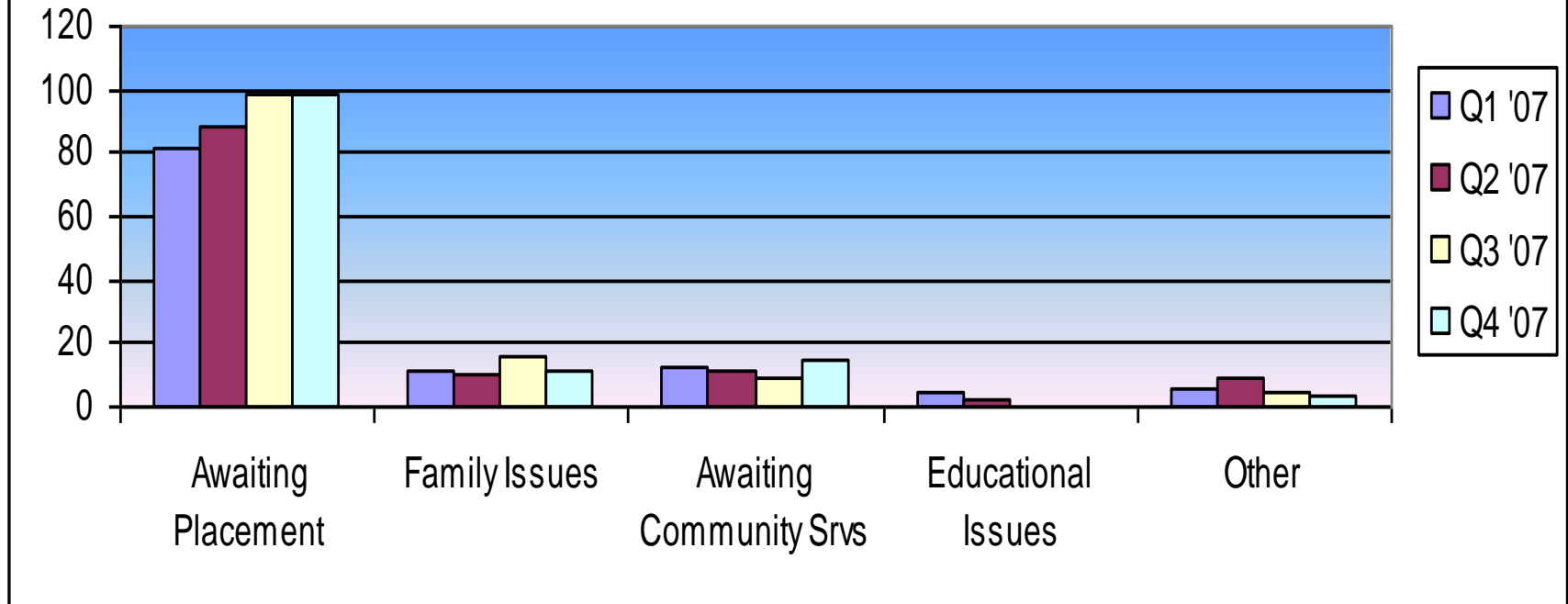
Includes: Delayed cases discharged within the quarter or still in care at the end of the quarter

Average Days in Discharge Delay Status by Facility



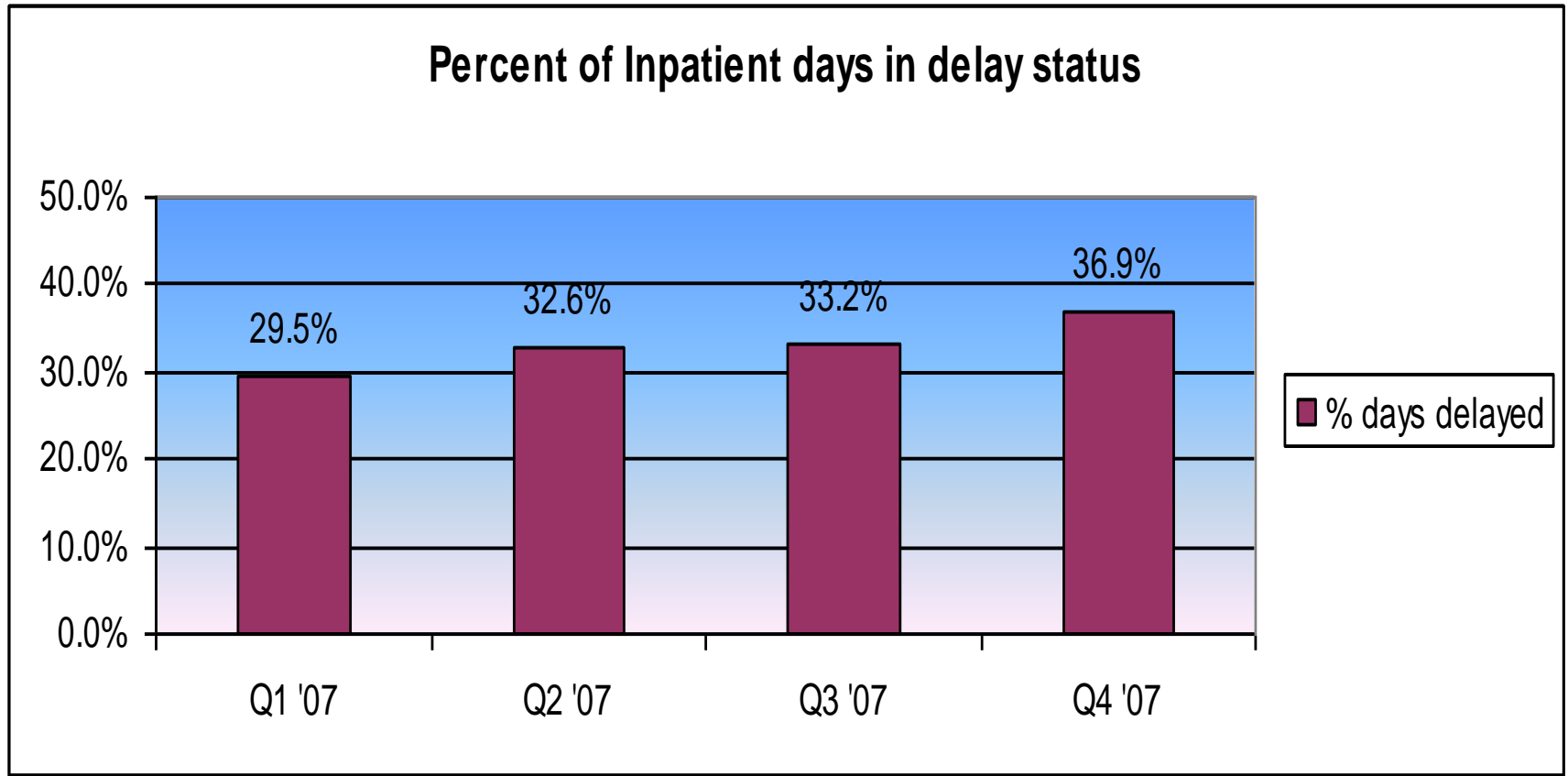
Includes: Cases in Discharge Delay that were discharged during the quarter or still in care at the end of the quarter: IPF, IPD or IPM

Inpatient Delay Reason Codes by Major Category



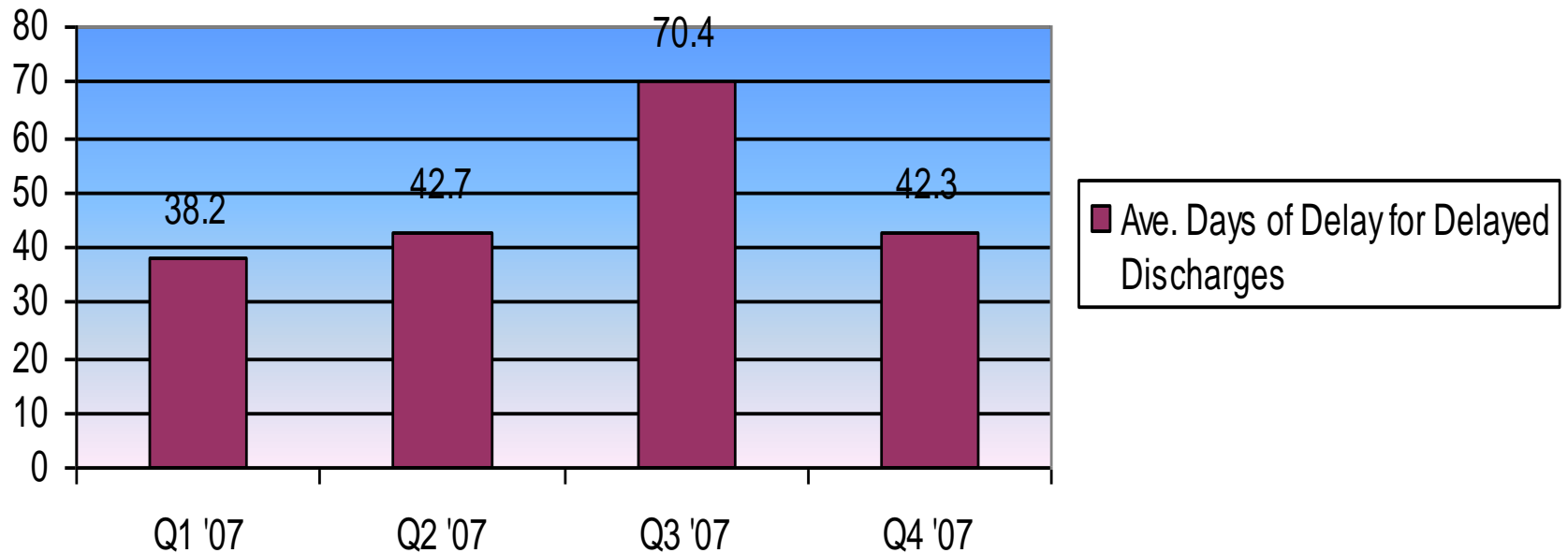
Includes: Discharges during the quarter or still in care at the end of the quarter

Excludes: Riverview



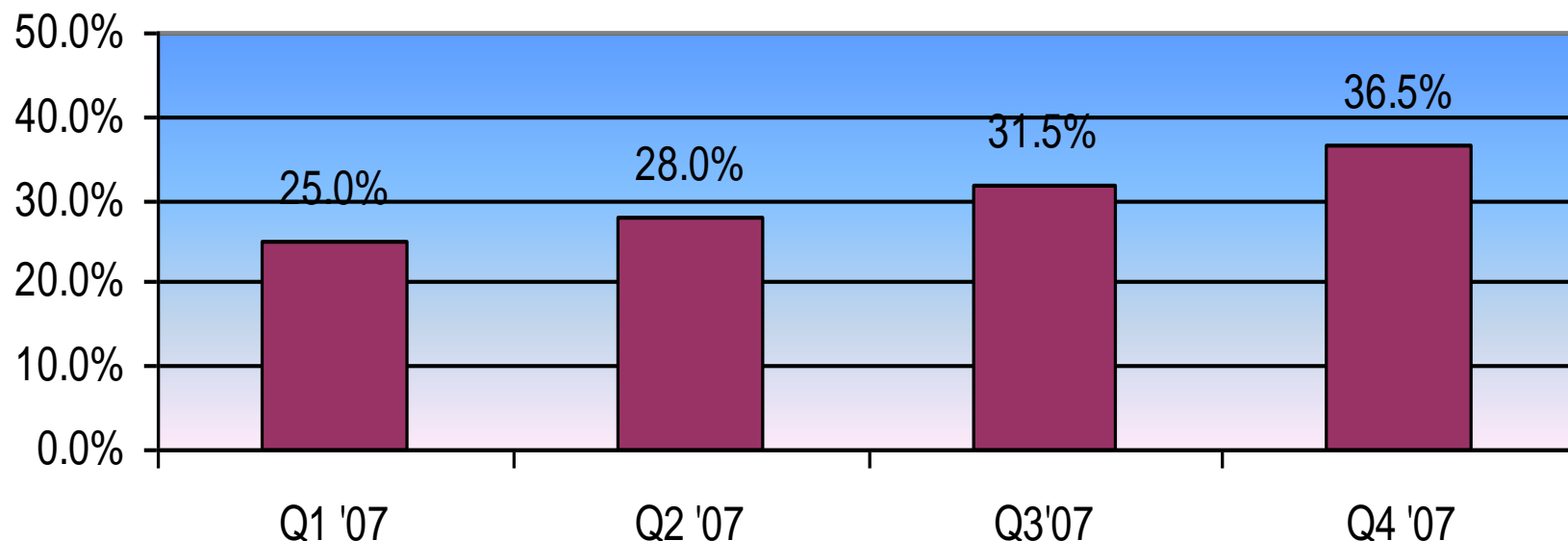
Includes: All cases discharged within the quarter or in care at the end of the quarter, including Riverview

Average Days of Delay for Delayed Discharges



Includes: Delayed cases discharged within the quarter, including Riverview (Significant number of discharges from Riverview in Q3 '07 account for large number of days)

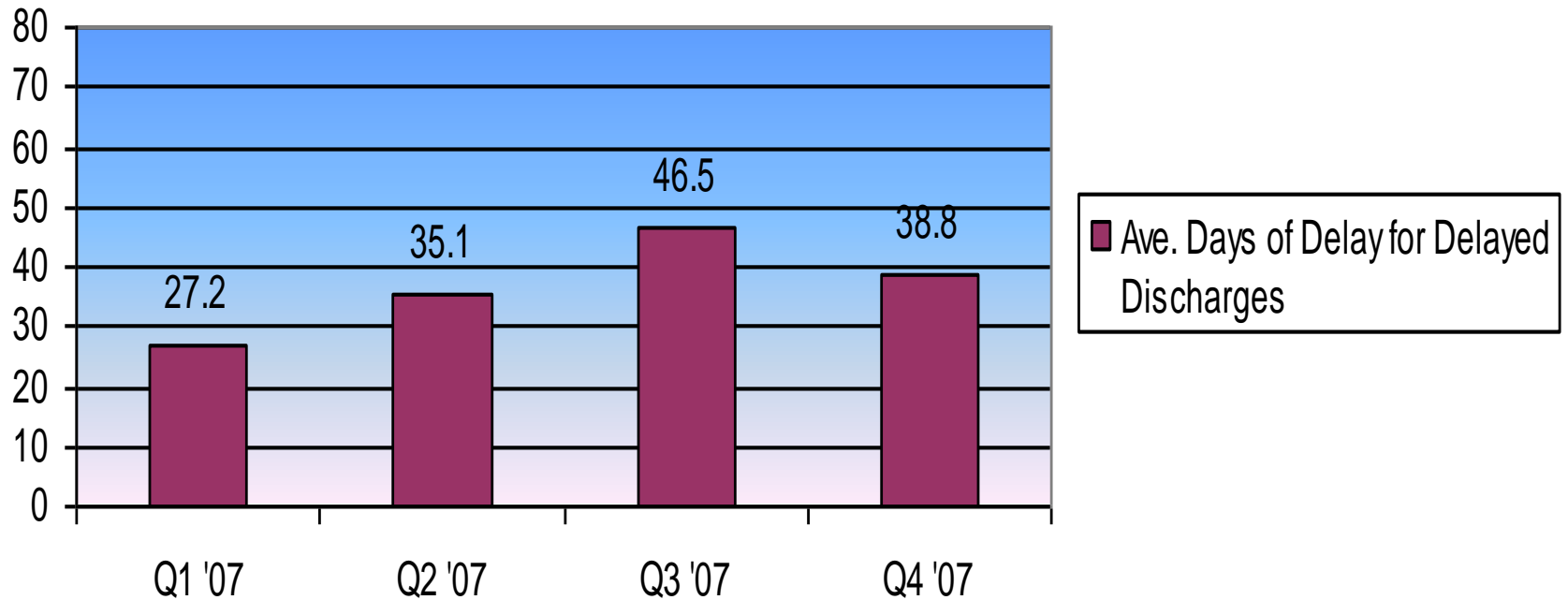
Percent of Total Inpatient days in delay status



Includes: All cases discharged within the quarter or in care at the end of the quarter

Excludes: Riverview

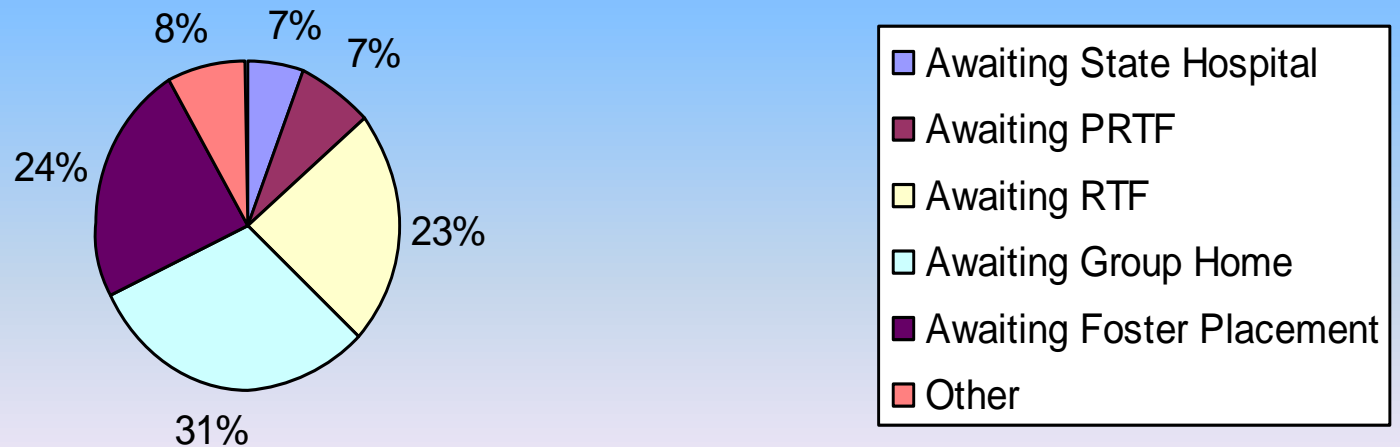
Average Days of Delay for Delayed Discharges



Includes: Delayed cases discharged within the quarter

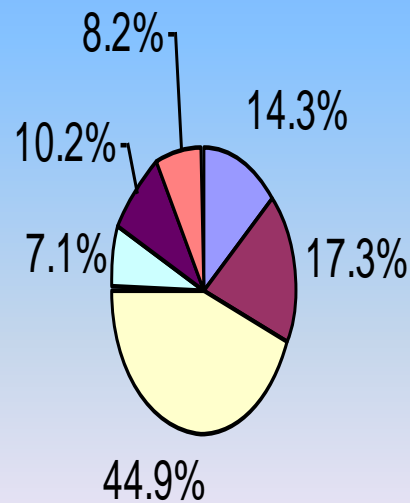
Excludes: Riverview

Awaiting Placement Reasons
(Denominator is total # of children in "Awaiting Placement"
Delay Status) Excludes Riverview



Includes: Children in any level of care: IPF, IPD, IPM, PRTF, RTC

**Awaiting Placement Reasons (IPF only) Excludes Riverview
(Demoninator is total # of children in "Awaiting Placement" Delay
Status)**



- Awaiting State Hospital
- Awaiting PRTF
- Awaiting RTF
- Awaiting Group Home
- Awaiting Foster Placement
- Other

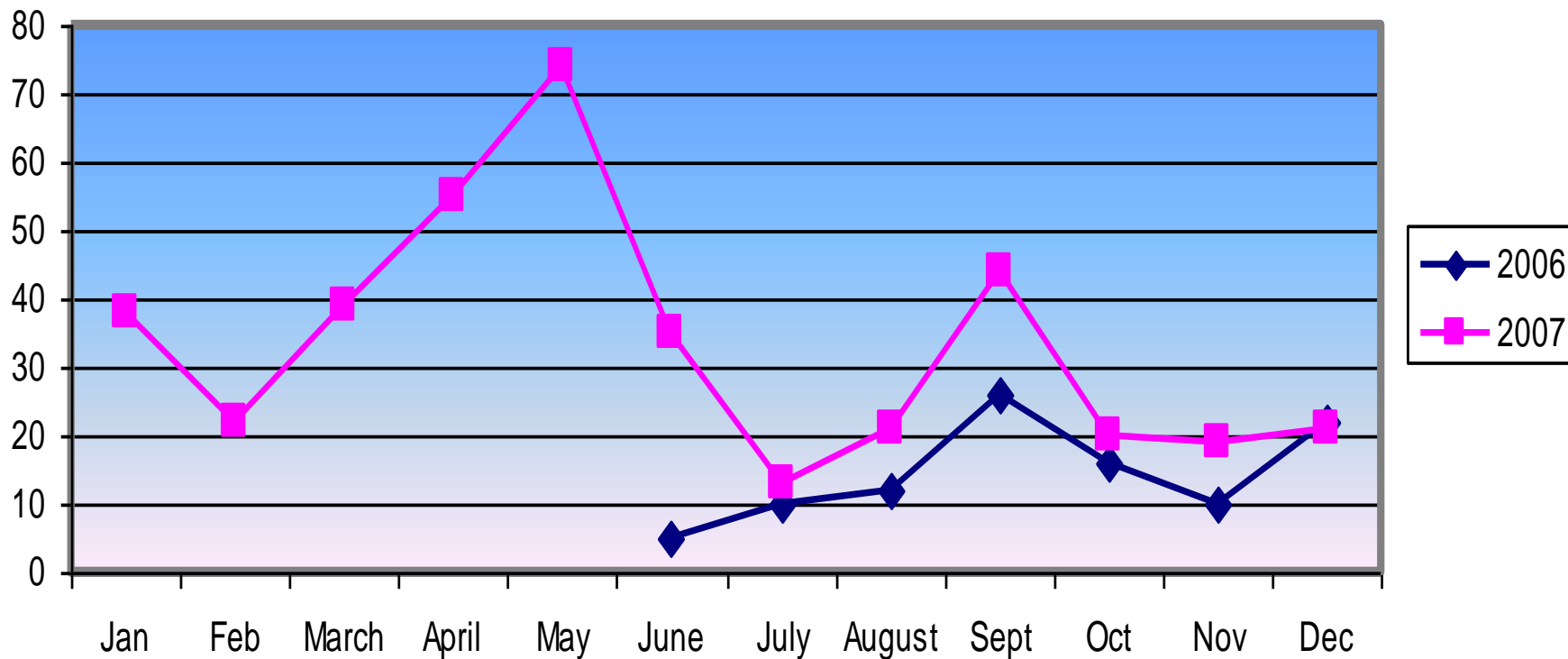
Children on Inpatient Units only

ED Discharge Delay

ED Delay 2007

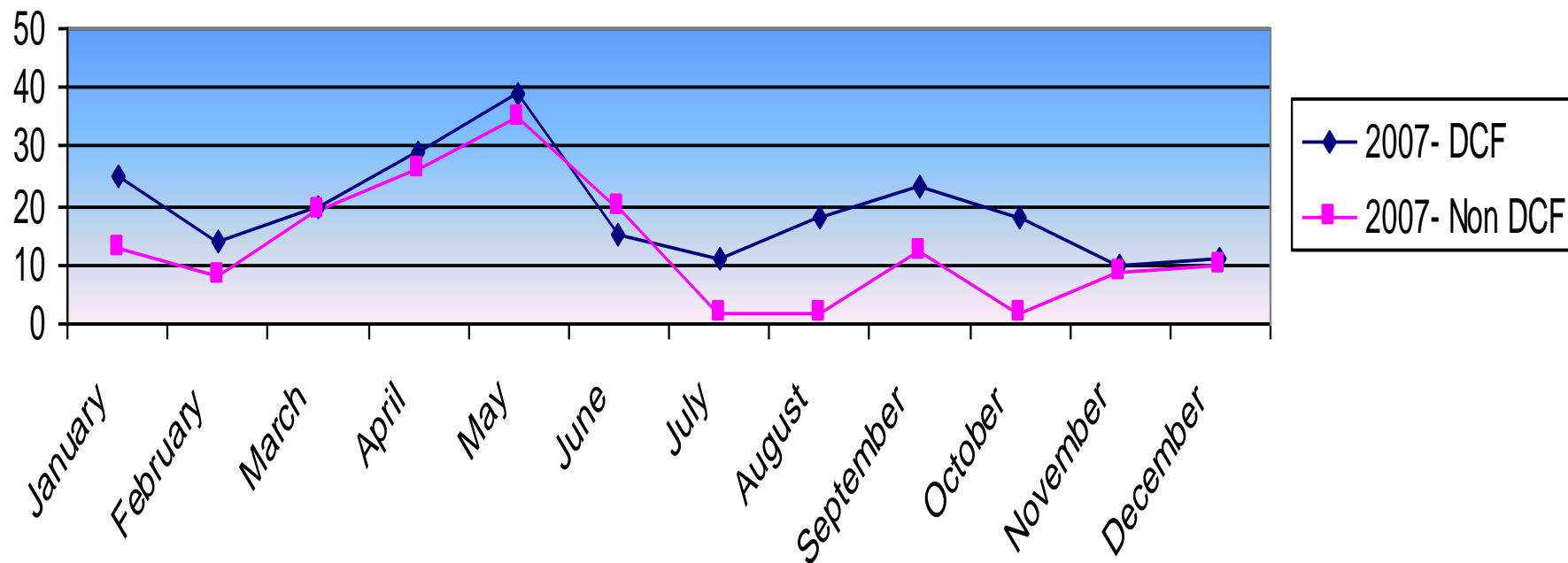
- 402 Members were reported as Discharge Delay in ED's in 2007
- Total Days in ED= 956 days.
- ALOS in ED in 2007 was 2.39 days
- ALOS does not include CAREs Unit stays
- In November, 24 CARES cases were identified, 13 DCF and 10 Non DCF.
- In December, 23 CARES cases were identified, 14 DCF and 9 Non DCF
-

Members in ED DELay Tracking Status per Month

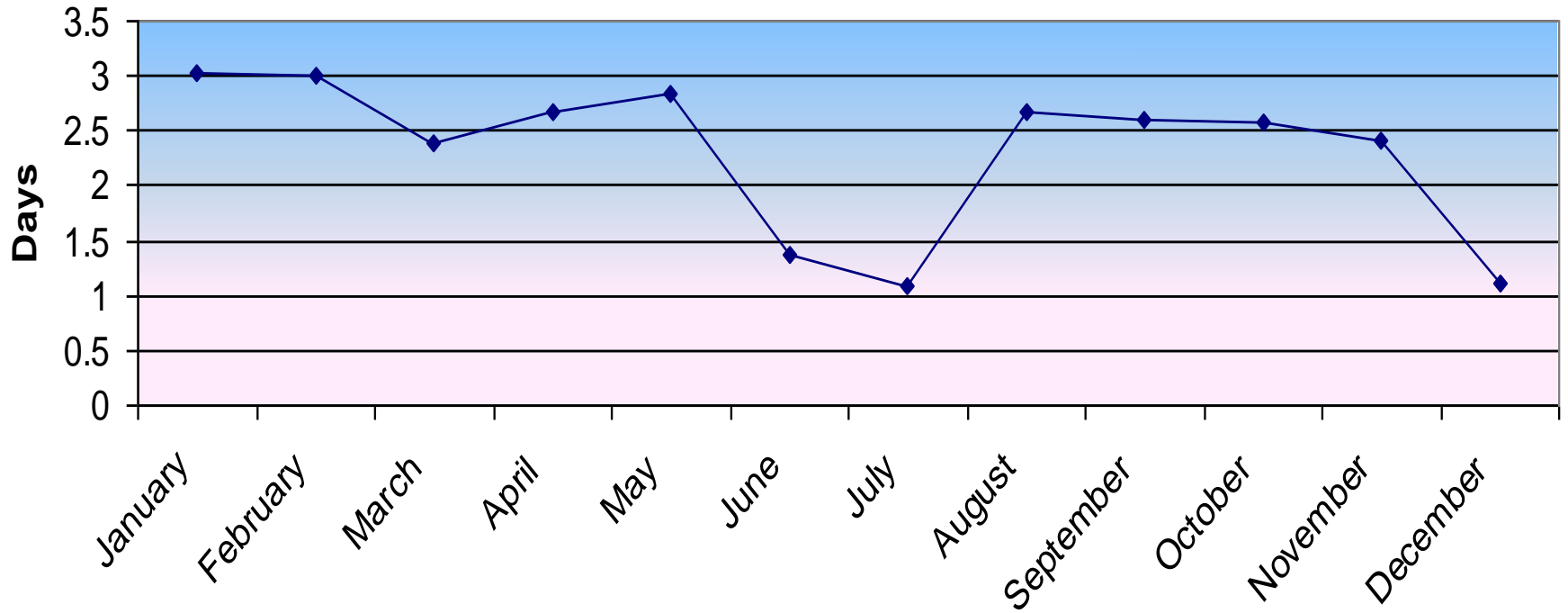


Number of Members in ED Delay Tracking Status Per Month

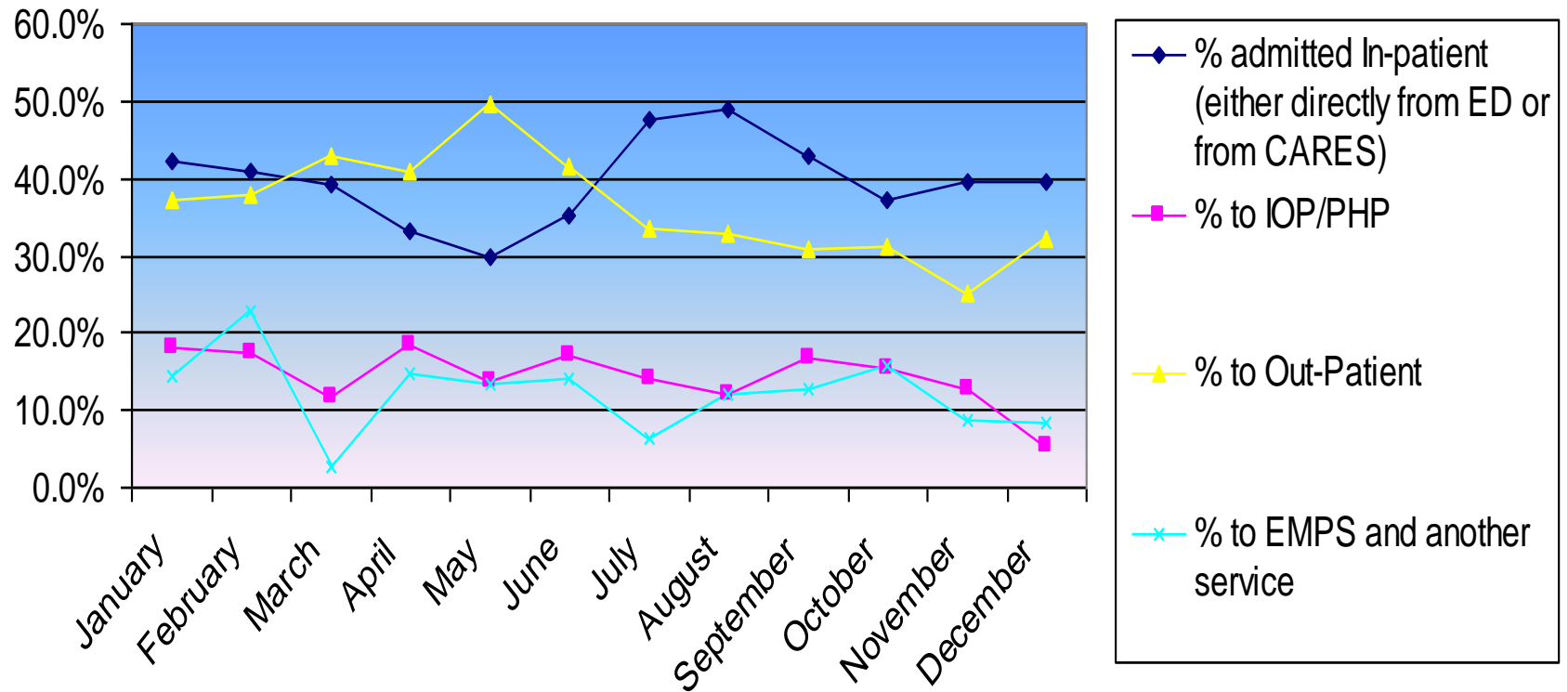
DCF vs. Non



Average LOS in ED in 2007 (all ED's)



2007 CCMC ED Disposition Data



Questions?